

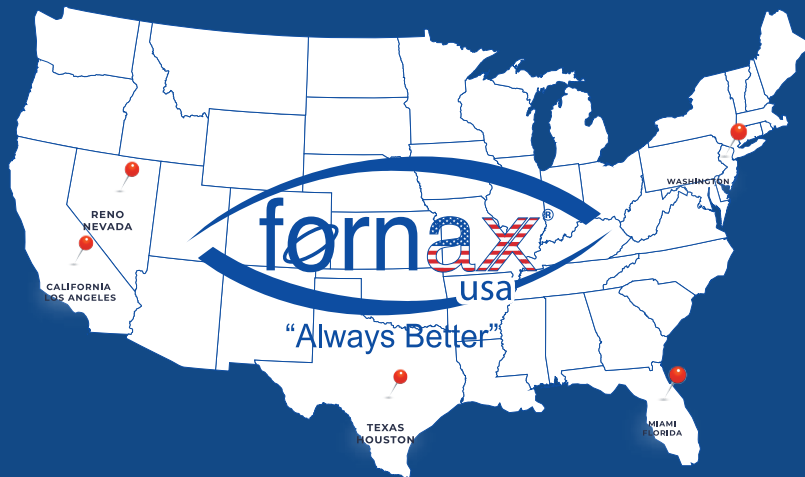


USA WINDOWS & DOORS SYSTEMS HARDWARE

With over 55 years of experience, we are one of the leading hardware suppliers of window and door systems.

www.fornaxusa.com





Fornax is a manufacturing company that designs, develops, and manufactures the most innovative system hardware and accessories for windows and doors.

As an internationally trusted name, Fornax has been supplying exclusive hardware since 1969 for both residential and commercial applications.



About Fornax

The foundations of our company were laid in 1969, and Yelken Madeni Eşya Ltd. was established in 1990. In 2006, we began operating as Yelken Kalıp A.Ş., with Fornax, a subsidiary of Yelken Kalıp, commencing its activities in 2005. Fornax made significant investments in machinery and equipment for espagnolette production lines, assembly lines, door and window handles, and other accessories.

Our company is committed to delivering high-quality products and achieving absolute customer satisfaction, principles that have driven its rapid growth in the PVC door and window accessories sector, making it one of the leading companies in the industry. In 2007, we obtained the ISO 9001:2000 Quality Certificate, elevating our standards for product quality and customer satisfaction. With the goal of becoming a leading brand in the sector, we focus on standardization, R&D initiatives, and place a strong emphasis on human resources development and training.



Address

Battalgazi Mh. Ahmet Haşim Cd.
No:27/1 Esenyurt, İstanbul

Phone

1-786-8490049

E-Mail

hardware@fornaxusa.com

Working Hours

Weekdays: 08:00 – 17:00

Weekend: Closed

Fornax

SWEEP LOCK-01

DIE CASTING



The lock use a separate retainer. The latch engages the retainer to lock the window. Used on vertical and horizontal sliding windows.

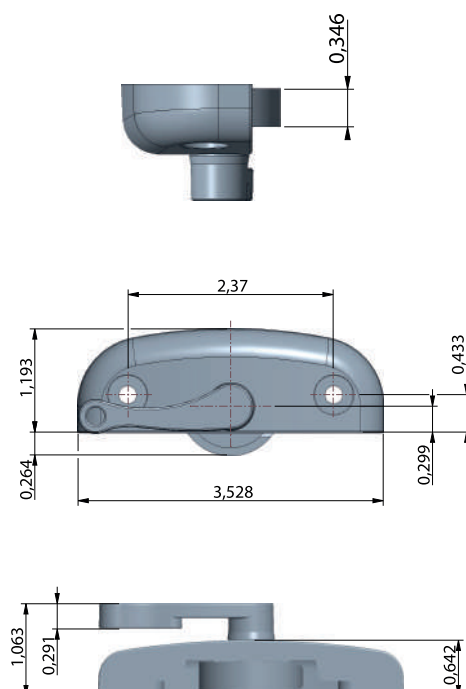
Other color options



TECHNICAL INFORMATION



We have certificates certifying the quality and reliability of our products and services.



Fornax

SWEEP LOCK-02

PLASTIC



A broom window lock is a versatile and effective security accessory designed for a variety of window types, including sliding, double-hung and single-hung windows.

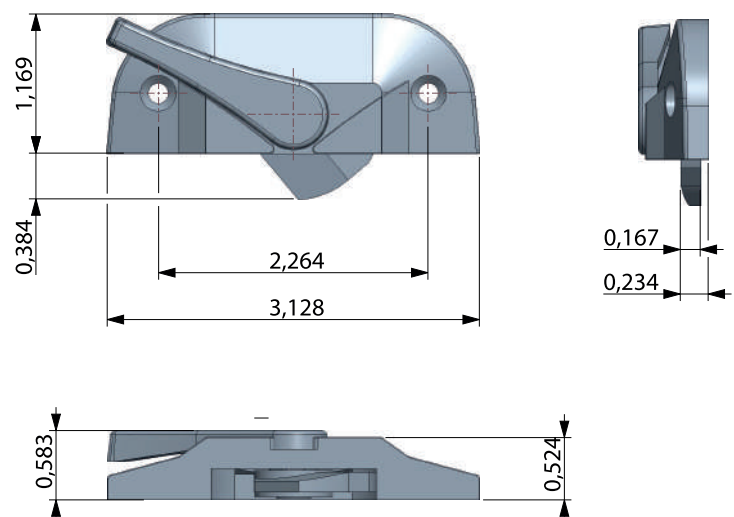
The lock does not use a separate retainer. The latch engages the fixed track to lock the window. Used on vertical and horizontal sliding windows.

Other color options



We have certificates certifying the quality and reliability of our products and services.

TECHNICAL INFORMATION



Fornax

SWEEP LOCK-03

DIE CASTING



A broom window lock is a versatile and effective security accessory designed for a variety of window types, including sliding, double-hung and single-hung windows.

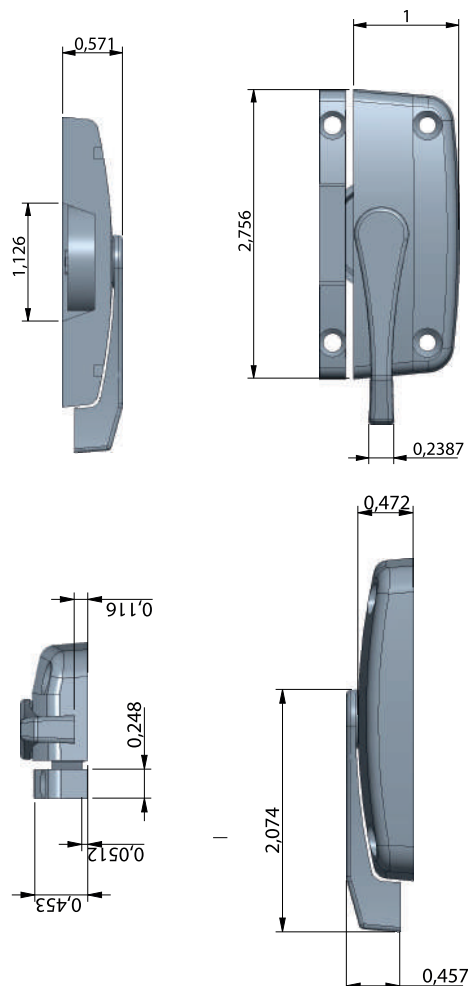
The lock does not use a separate retainer. The latch engages the fixed track to lock the window. Used on vertical and horizontal sliding windows.

TECHNICAL INFORMATION

Other color options



We have certificates certifying the quality and reliability of our products and services.



Fornax

SASH LOCK-01

DIE CASTING



Other color options

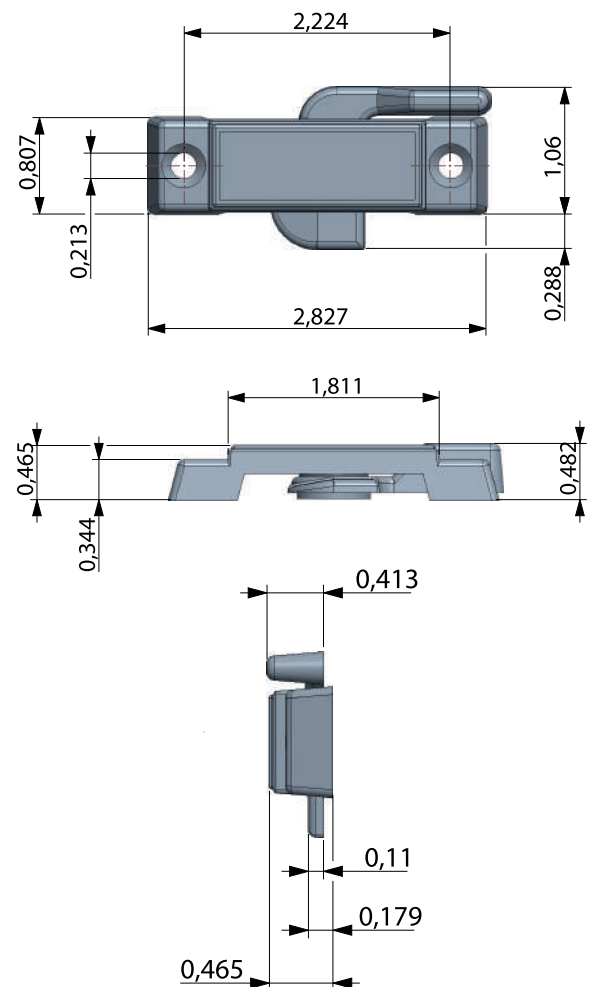


We have certificates certifying the quality and reliability of our products and services.

A broom window lock is a versatile and effective security accessory designed for a variety of window types, including sliding, double-hung and single-hung windows.

The lock does not use a separate retainer. The latch engages the fixed track to lock the window. Used on vertical and horizontal sliding windows.

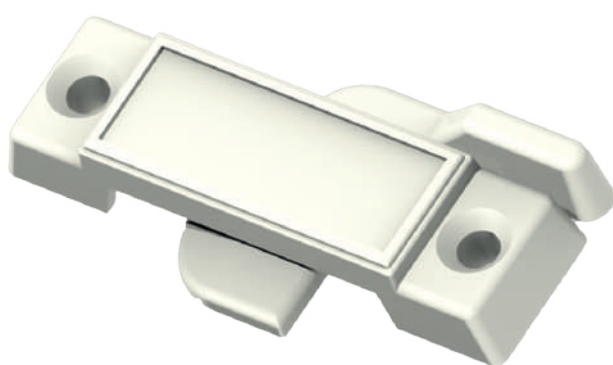
TECHNICAL INFORMATION



Fornax

SASH LOCK-02

PLASTIC



A broom window lock is a versatile and effective security accessory designed for a variety of window types, including sliding, double-hung and single-hung windows.

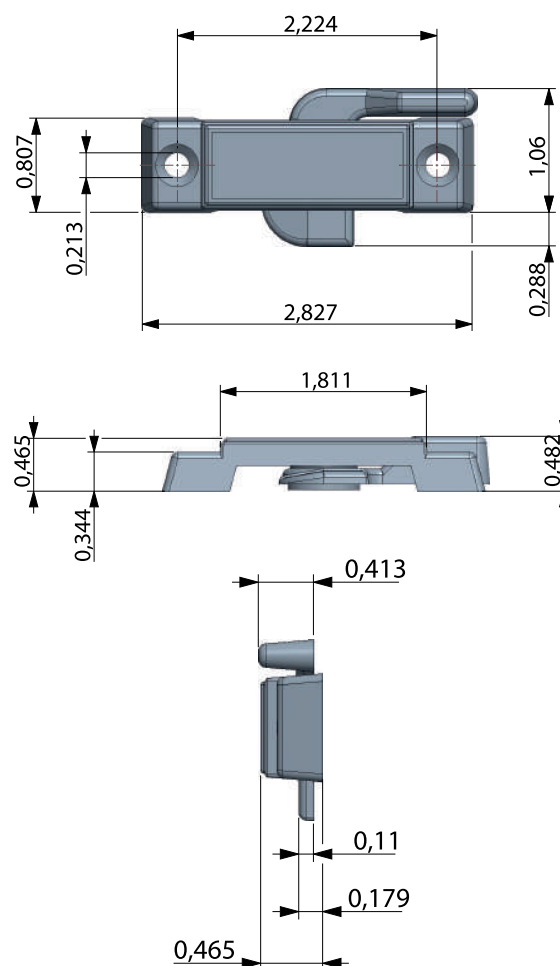
The lock does not use a separate retainer. The latch engages the fixed track to lock the window. Used on vertical and horizontal sliding windows.

TECHNICAL INFORMATION

Other color options



We have certificates certifying the quality and reliability of our products and services.



Fornax

TILT LATCHE

LEFT-RIGHT



These spring-loaded tilt latches are constructed of plastic and they are white in color. They feature a 4 screwless, snap-in install and require a milled slot to mount onto top horizontal rails of sash.

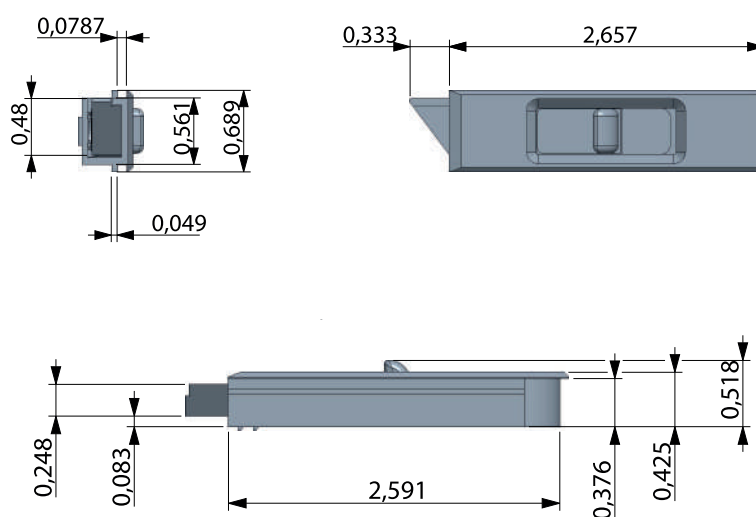
The width of these latches measures 2-3/4 inch and the depth is 11/16 inch x 3/8 inch thick. These tilt latches are used on single and double hung vertical sliding sash panels designed to tilt-in and down from the top for cleaning purposes. Each package includes one right-hand and one left-hand latch. These tilt latches are simple to install and are used by a variety of window manufacturers.

Other color options



We have certificates certifying the quality and reliability of our products and services.

TECHNICAL INFORMATION



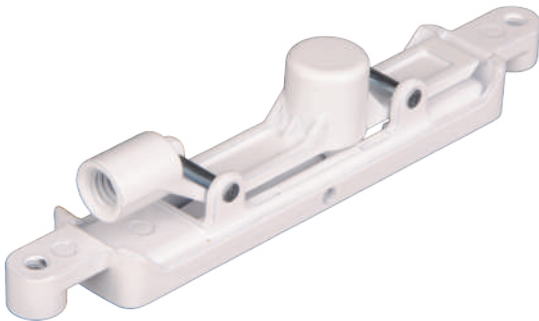
Fornax

FLUSH BOLT OPERATOR

DIE CASTING



These Flush Bolts are designed to work on any radius faced narrow stile aluminum door. Intended to securely lock an inactive door.



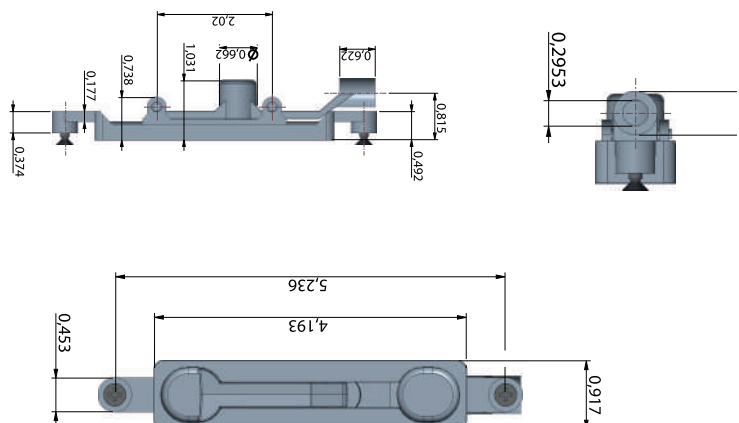
Other color options



TECHNICAL INFORMATION



We have certificates certifying the quality and reliability of our products and services.



Fornax

PATIO SLIDING LOCK

ALUMINUM BODY

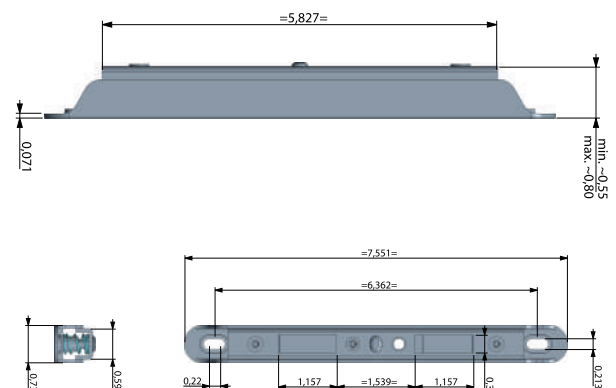
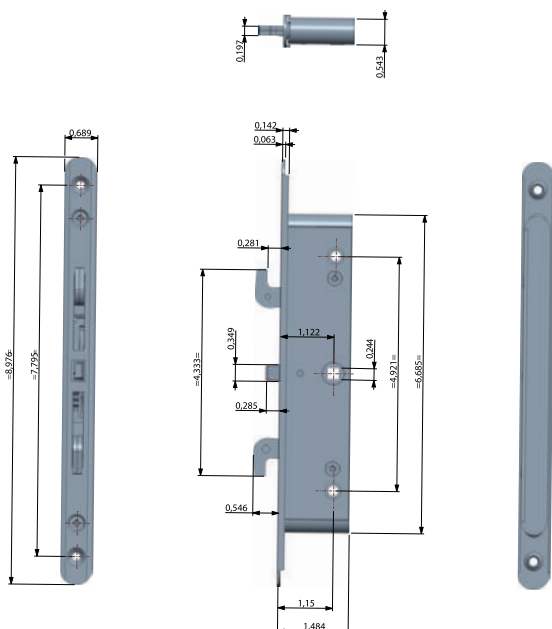


The PATIO SLIDING LOCK is a lock system designed to enhance the security of sliding doors and windows. This product is ideal for users looking to improve security measures in homes and workplaces, thanks to its easy-to-install structure. Made of stainless steel or durable materials, it ensures long-lasting use. It is particularly preferred for child safety and burglary prevention. Its ergonomic design allows for easy operation and compatibility with sliding systems of various sizes and models.

Other color options



TECHNICAL INFORMATION





www.fornaxusa.com